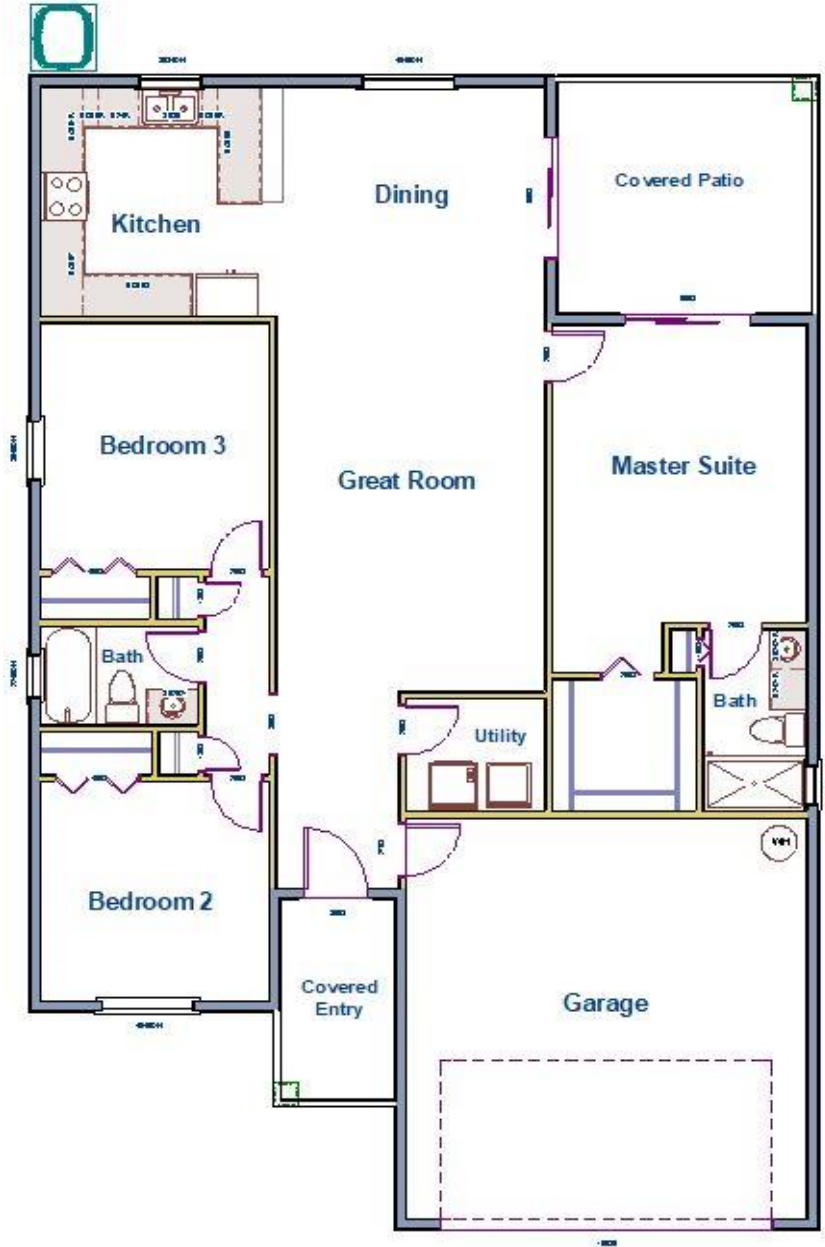


AMERICAN HOUSING BUILDERS II, INC.

"Building the American Dream One Home at a Time"

CBCO60384

Wilson



Overall Size	38'-0" x 58'-0"
Living	1400 sq ft
Garage	416 sq ft
Cov. Patio	152 sq ft
Entry	57 sq ft
TOTAL	2025 sq ft

Note:

Because we constantly improve our homes, floor plans are subject to change. We reserve the right to change designs, features, materials and pricing without prior notice. Room dimensions are approximate and may be based on outside dimensions.

7195 66th St North, Pinellas Park, FL 33781 * 727-546-6611

AMERICAN HOUSING BUILDERS II, INC.

"Building the American Dream One Home at a Time"

CBCO60384

Wilson



ELEVATION: A



ELEVATION: B

Because we constantly improve our homes, floor plans are subject to change. We reserve the right to change designs, features, materials and pricing without prior notice. Room dimensions are approximate and may be based on outside dimensions.

7195 66th Street N, Pinellas Park, Florida 33781 * 727-546-6611 * americanhousingbuilders2.com